

PINE LILY CHAPTER  
FLORIDA NATIVE PLANT SOCIETY

February 2013  
Volume 7, Issue 2



The purpose of the Florida Native Plant Society is to promote the preservation, conservation, and restoration of the native plants and native plant communities of Florida.

### BOARD OF DIRECTORS:

**President:**

Jenny Welch.....[mwelch@cfl.rr.com](mailto:mwelch@cfl.rr.com)

**1st Vice President:**

Mark Johnson  
.....[mjohnson@ecotonelanddesign.com](mailto:mjohnson@ecotonelanddesign.com)

**Secretary:**

Sandy Webb..... [swebbzeit@gmail.com](mailto:swebbzeit@gmail.com)

**Treasurer:**

Kaity Storer ..... email pending

**Chapter Rep:**

..... Apply now

**Membership:**

Susan Parent ..... [sparent20@yahoo.com](mailto:sparent20@yahoo.com)

**Publicity/Newsletter:**

Loret.....[PinelilyFNPS@aol.com](mailto:PinelilyFNPS@aol.com)

**Visit us on the Web:**

<http://www.pinelily.fnpschapters.org/>

**Meeting is Thursday  
February 21st 6:30p.m.**

First United Methodist Church  
101 W. Dakin Avenue, Kissimmee

Ask a friend or a neighbor  
to join and help preserve  
more natural areas

# The Lily Pad

## February Program

Our speaker this month will be Mike Wacht, Public Information Specialist for SunRail construction. Mike keeps the public informed about the work being done to get SunRail ready for passenger service in 2014. He also markets the state's 511 traffic info system

Mike is a 1987 graduate of Washington & Lee University with a degree in journalism. He has worked as a professional communicator throughout most of his career. He has worked as a staff writer, copy editor and photographer for newspapers and at radio stations until he went to work for Tupperware Corporation as a sales promotion project manager and staff writer, which moved him to Florida. He also worked as a reporter and Director of Communications for the Florida Conference of The United Methodist Church.

## 2013 Conference Registration is Open

The Florida Native Plant Society annual conference will be held at the University of North Florida, Jacksonville, Florida, May 16-19, 2013. The theme, "Celebrating La Florida; the Land of Flowers," is to commemorate Ponce deLeon's naming of this region when he landed here 500 years ago.

Organized by the Ixia Chapter, field trips will be held on Thursday and Sunday. Great workshops and presentations throughout. Details and registration: [www.fnps.org](http://www.fnps.org).

# Native Plant Sale

**Friday 2pm-6pm & Saturday 8am-2pm  
April 5-6, 2013**

**OSCEOLA HERITAGE PARK**

**OVER 1000 NATIVE PLANTS**

**Sponsored by  
FNPS CONRADINA, CUPLET FERN, PINE LILY and  
TARFLOWER Chapters**

"The ultimate test of man's conscience may be his willingness to sacrifice something today for future generations whose words of thanks will not be heard."

— Gaylord Nelson, former governor of Wisconsin, founder of Earth Day

## Chapter Treasurer Needed

Pine Lily is in need of a new Treasurer. Our chapter provides a lot to the community in the way of outstanding programs, relay of information to our school system and public awareness through our outreach at community events.

While Osceola County is large, its population is small and as such our membership numbers are considerably less than most chapters across the state. That gives us a relatively small pool of people to take on leadership roles. The board is asking the membership to please consider helping in a leadership role.

The chapter cannot grow without everyone's help, so please let Chapter President Jenny Welch know where you might fit into moving us into the future.

## Native Plant Sale Help

In conjunction with the Florida Association of Native Nurseries (FANN) Trade Show which starts on April 4<sup>th</sup>, Pine Lily has joined forces with 3 other chapters: Conradina (Brevard), Cuplet Fern (Seminole) and Tarflower (Orange) to put together a huge native plant sale to take place at Osceola Heritage Park on April 5<sup>th</sup> and 6<sup>th</sup>. With more than 1000 plants available for sale, volunteers are needed to help with the running the sale.

Our County has been chosen for a trade show in the native plant field, and it is important to provide support to bring the public on board which will further the FNPS mission and help the local businesses throughout the state that provide Native Plants and related services. If there is enough shown interest maybe Osceola will attract it's very own local nursery.

## Upcoming

**March**– Terry LaPlante, SE Field Organizer  
Florida's Water and Land Legacy Campaign

**April**–Ginny Stibolt  
Subject: Organic Gardening Methods and Ecosystem Gardening

**May**–tba

## Save the Date

**Saturday, March 23**

9:00am-3:00pm

**Florida Wildflower & Garden Festival**

West Indiana Ave.,  
Downtown DeLand

Speakers, Demonstrations, Plant & Gardening Supply Vendors, Kids Art Zone, Children's Gardening Activity, Music and More! Recipient of the Florida Secretary of State's Award for Outstanding Special Event  
**Free Parking and Admission**

**Thursday & Friday, April 4-5, 2013**

**FANN Native Plant Trade Show**

*"All the plants, all the professionals, all in one place"*

Exhibition Building,  
Osceola Heritage Park, Kissimmee

EXHIBITS ONLY fee: **\$10 (early bird)** includes entry both days. \$25 after March 1.

PLANT EXHIBITS

CONTINUING EDUCATION SEMINARS (fees apply)

DEMONSTRATION LANDSCAPES

Putting Wildflower Research to Work: Mini Symposium (fees apply)

Details: <http://www.floridanativenurseries.org/>

**Wednesdays, March 20 – May 8th, 2013**

**8:30 am – 4:30 pm**

**Florida Master Naturalist Freshwater Wetlands Training**

Location varies throughout the county.

Through classroom, field trip, and practical experience, this Module provides instruction on the general ecology, habitats, vegetation types, wildlife, and conservation issues of Freshwater Wetlands in Florida - Marshes, Swamps, and Permanent Wetlands (Lakes, Rivers, Springs, and Streams). The program also addresses society's role in wetlands, develops naturalist interpretation skills, and discusses environmental ethics.

Call 321-697-3000 or find complete details at: <http://www.masternaturalist.ifas.ufl.edu/> Fee applies.

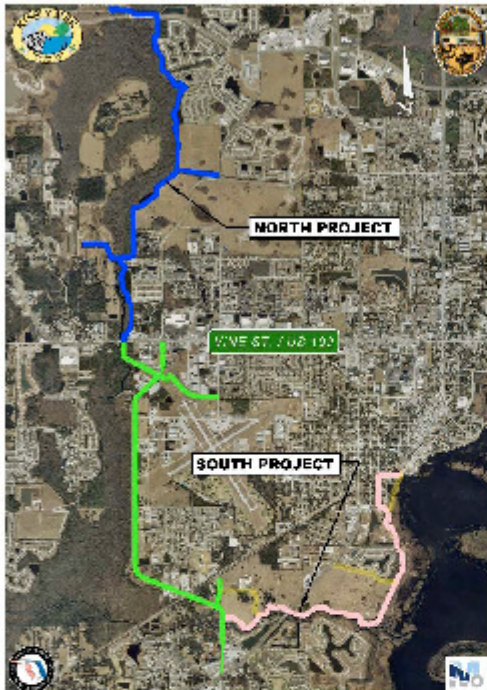
The Florida Native Plant Society 33rd Annual Conference  
"Celebrating La Florida; the Land of Flowers,"

**May 16-19, 2013**

University of North Florida in Jacksonville

organized by the **FNPS Ixia Chapter.**

# SHINGLE CREEK REGIONAL TRAIL UPDATE FOR JANUARY 2013



Thank you for your interest in the Shingle Creek Regional Trail. Below are a few project highlights as of January 14, 2013:

The design effort for the Shingle Creek Regional Trail (SCRT) has been divided into North and South project sections. They are separated by a middle section comprised of the Kissimmee Multi-use Trail and the Hoagland Boulevard Extension projects; both of which are not part of this project. Once complete, the entire route is planned to be contiguous. See the map of the approved alignments to the left.

#### North Phase Status

The North Project Area - Phase 1 100% Plans were submitted January 14, 2013.

#### South Phase Status

The alignment for the South Project Area - Phase 1 was approved in late November, 2012. Preliminary Plans are underway with a goal to have them completed by summer, 2013.

#### Recent Accomplishments

- Presentation regarding the overall project was made to the Kissimmee City Commission (09-11-2012)
- South Project Area, Public Information Meeting (10-04-2012)
- Osceola County Welcome Center / History Museum Grand Opening (10-18-2012)
- SCRT Grant Funding Public Meeting (10-25-2012)
- South Alignment Analysis Report finalized and approved (11-30-2012)
- Ongoing coordination with Osceola County Land Conservation Advisory Board (LCAB) for properties adjacent to Shingle Creek. The City of Kissimmee and KCG presented to the Board at both October and November, 2012 meetings, and at the January, 2013 meeting.

**PROJECT GOALS** The goals of the SCRT are to provide a safe, natural recreation amenity for the Kissimmee, Osceola County and Central Florida residents, and also to attract ecotourism for bicyclists, pedestrians and recreational water users such as canoeists and kayakers to the surrounding urban area. SCRT is the southern portion of a planned 32-mile, multi-county regional trail system.



- North Phase 1 100% Plans submitted on January 14, 2013
- South Phase 1 Preliminary Plans are underway

**IMAGES OF THE SCRT SOUTHERN TRAIL PROPOSED PROPERTY**

Below are images of the South Phase 1 area, taken during the design team site reconnaissance in September, 2012.

Once constructed, this trail will present opportunities for bird-watching, among other recreational uses.



A well attended public information meeting was held in the City of Kissimmee Chambers in October, 2012.





The project is being developed through cooperation between the local governments of the City of Kissimmee, Osceola County, the City of Orlando and Orange County. The Orlando Metropolitan Planning Organization (MetroPlan – Orlando) was instrumental in securing the federal funds for this project. The FDOT is responsible for administering the funds.

To be added to our database of interested parties please send a request via e-mail to [jacklyn.vanderpool@thefulcrumintl.com](mailto:jacklyn.vanderpool@thefulcrumintl.com).

The project is being developed through cooperation between the local governments of the City of Kissimmee, Osceola County, the City of Orlando and Orange County. The Orlando Metropolitan Planning Organization (MetroPlan – Orlando) was instrumental in securing the federal funds for this project. The FDOT is responsible for administering the funds.



*This is the end of the SCRT January, 2013 Update. For more information please check back on this website or contact: Randy Schrader, Project/Long-Range Planner, City of Kissimmee at [RSCHRADE@kissimmee.org](mailto:RSCHRADE@kissimmee.org) or 407-518-2244.*

