

PINE LILY CHAPTER
FLORIDA NATIVE PLANT SOCIETY

The Lily Pad

April Meeting

Mark Bush, Ph.D. will do a presentation on "Climate and its affects on Native Plants".

Dr. Bush is a Professor of Biology and is Chair of the Ecology Program at the Florida Institute of Technology.

Dr. Bush's long involvement in conservation includes the local level where he serves on the Environmentally Endangered Lands selection and management committee for Brevard County, Florida, and at an international level in the policy forming Karoo Group for Conservation International. Bush has also served as an educational consultant for the World Bank. In

addition to 90+ articles in international peer journals, he has written an undergraduate textbook "Ecology of a Changing Planet" and edited a research level book "The Responses of Tropical Rainforest to Climate Change".

Conference Sales Booth

Sandy Webb and Jenny Welch have volunteered to cover, for Pine Lily, a required shift in the chapter merchandise sales booth at the Conference. We need ideas on what to sell and help in preparing the items for sale. Please contact Jenny to help out in this important fund raising opportunity.

April 2012
Volume 6, Issue 4



The purpose of the Florida Native Plant Society is to promote the preservation, conservation, and restoration of the native plants and native plant communities of Florida.

BOARD OF DIRECTORS:

President:

Jenny Welch.....mwelch@cfl.rr.com

1st Vice President:

Mark Johnson

.....mjohnson@ecotonelanddesign.com

Secretary:

Sandy Webb..... slwebbzeit@gmail.com

Treasurer:

Kaity Storer email pending

Chapter Rep:

..... Apply now

Membership:

Susan Parent sparent20@yahoo.com

Publicity/Newsletter:

Loret..... PinelilyFNPS@aol.com

**Meeting is Thursday
April 19th 6:30p.m.**

First United Methodist Church
101 W. Dakin Avenue, Kissimmee



Earth Day is April 22, 2012

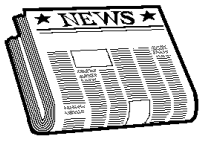
New/Renewing Members

Deidre Clark	N
Jacqueline Dombovy	N
James Forman	N
Kimberly Duffy	R
Barbara Shuman	R
Kenny Hall	R
Jim Ash	R
Andrew W Herrmann	R

"I think the environment should be put in the category of our national security. Defense of our resources is just as important as defense abroad. Otherwise what is there to defend?"

— Robert Redford

Pine Lily Good News



Pine Lily has been nominated for business partner of the year for Osceola County School District. Each school is allowed to nominate a business partner and Pine Lily

was nominated by the business coordinator from Four Corners Charter School. Jenny Welch will accept the award at the school district luncheon on behalf of Pine Lily.

Community Outreach

As a direct result of Pine Lily being a business partner with the school district, specifically through the efforts of Jenny Welch, Marriott hotels is donating a quantity of 10-15 gallon Oak or Magnolia trees to some of Osceola County schools as follows:

<u>School</u>	<u>Trees Donated by</u>
Sunrise Elementary School	Marriott's Cypress Harbour
Celebration High School	Marriott Village
New Beginnings	Orlando World Center Marriott
Flora Ridge Elementary	Marriott's Harbour Lake
Highlands Elementary	JW Marriott Grande Lakes
Partin Settlement	Marriott Airport

The trees are due in at Marriott Wed. April 18. Pine Lily is responsible to pick them up. If you can help with this part of the project, please contact Jenny (407-319-2488 cell).

Marriott will be planting them and will arrange with each school for a date to do so. This donation is huge!

In addition, Sam's Club on 192 also donated 9 palms that they were going to just throw away. Jenny and Sandy Webb have already picked them up.

Anyone can attend a Business Partner meeting. May 24th at 4pm is the next one scheduled. It will take place at New Beginnings Education Center, 2599 W Vine St, Kissimmee. There, you can see some of the garden work already accomplished by volunteers, including Pine Lily members.

We had an information table at Harmony's Dark Sky Festival. We always get good feedback at that event and gave out a huge quantity of the 2012 FANN Real Florida Gardener Guides and Backyard Conservation Booklets. Loret brought a cast of caterpillars, a syrphid fly, leaf-footed bug and a butterfly to gain the attention of children and to teach them about the interaction of insects and native plants. The adults learned a few things to, such as leaving "weeds" in your lawn as larval hosts for our disappearing butterflies.

This is our busy time of year for outreach so if you can spare a few hours to cover a display, please let Jenny know.

BECAUSE OF LACK OF VOLUNTEERS, we had to turn down an excellent opportunity to showcase our chapter on May 12, 2012 at The Osceola County Star Spangled Celebration taking place at Shingle Creek. They are inviting Environmental organizations to celebrate the County's 125th birthday. We had already committed to the Baby Owl Shower at Audubon Center for Birds of Prey that we provide an information table each year. Kattya is covering that event.

Also on that same date, Pine Lily has been invited to join Tarflower, Beautyberry, Cuplet Fern, and Heartland Chapters on a field trip to the Lake Wales Ridge State Forest to help with finding endangered plants to GPS for the state forest.

The FFS office there only has someone who is funded for research on the federal listed scrub/sandhill species, so areas such as wet and dry prairies are not being sampled for spp such as Pinguiculas and orchids like Plantanthera sp.

This is a good opportunity for FNPS to meet a need where there is no other way to gather the data. To participate in this event, please contact Catherine Bowman of Tarflower (garberia08@gmail.com).

If you can cover the Shingle Creek event, contact Jenny and she may be able to get us a late reservation.

Volunteers Needed – Contact Jenny Welch

- New Beginnings School..... Wednesdays
- Shingle Creek Adventure Challenge Apr 22 1030a-2p
- Education In The Park..... Apr 28
- Lakeview Elem School Nature Night.....May 3, 6-7:30p

Historical Gardens Landscaping
1st and 3rd Sunday each month 10a – 12:30p
contact Kattya Graham 407 738 9480 (mobile)
1st Sunday stay for potluck lunch and Bluegrass Jam

- Star Spangled Celebration Shingle Creek May 12
- Baby Owl Shower May 12
- Lake Wales plant mapping field trip..... May 12
- Highlands Elementary Wildflower Garden help.....tba



Upcoming

May - Conference –no meeting

June – TBA

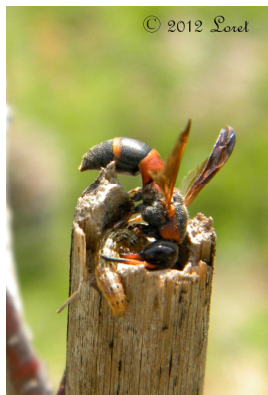
July - TBA

August - Stephen Tonjes
Senior Environmental Scientist
Florida Department of
Transportation, District Five.

Nesting Season Isn't Just for Birds

by Loret

A week or two ago I was out and noticed some activity by the Chickasaw Plum sapling I planted this past fall. The tree is staked with a hollow bamboo stick where an attractive Red and Black Mason Wasp (likely *Pachodynerus erynnis*) was busy. As I looked closer, I saw that it was dragging a caterpillar into the center of the bamboo. So, this Mason Wasp, also known by the common name Red-marked *Pachodynerus* is beneficial in the garden since larval stages develop as a parasitoid of caterpillars. It is also beneficial as an adult performing minor pollination duties as it feeds on nectar and pollen.



A Mason Wasp is one of the solitary wasps so you really don't have to fear being stung unless you grab the poor thing. Being solitary, they don't swarm and they don't tend to defend their nests. This little bugger didn't give me a second look, even though I

Species Spotlight

TWINFLOWER (*Dyschoriste oblongifolia*)



Photo © 2012 Loret

A low growing perennial bedding plant or ground cover, this pretty plant is a member of the snapdragon family. With small leaves on erect stems, the heaviest blooming of its side-by-side

flowers occurs in May. Plants reach a height of 6-12 inches. Propagated by seed or rhizomes it forms dense patches in dryish, sandy soil.

It is a larval food plant for the common buckeye butterfly and is appreciated by bees and other pollinators.

Light: sun to part shade

Drought tolerance: high

Plant spacing: 24 to 36 inches

Bloom time: Spring, Summer, Fall

USDA hardiness zones: 8 through 11

source: *University of Florida IFAS; www.hawthornhillwildflowers.blogspot.com*

was circling with the camera and was very close.

Mason wasp parents build mud cells and lay a single egg in each cell placing it on a caterpillar. They capture caterpillars by paralyzing them and the family of choice is Noctuidae, which includes cutworms, armyworms and other destructive pests. They also have been known to feed on beetle larvae.

I am waiting for an identification confirmation on the caterpillar that I believe is the larvae of a Coffee-loving *Pyrausta* Moth (*Pyrausta tyralis*). After they get the nest set up and the eggs laid, they seal it up with mud which in Florida really is damp sand. Now we wait.

This is integrated pest management at it's best. Why use pesticides when Mother Nature will perform admirably if given the chance. Hollow tube-like sticks provide nest areas for solitary bees and wasps so place some around your garden.

Ed. Note: This article was originally published March 23, 2012 at <http://www.beautifulwildlifegarden.com>

Save the Date

**Saturday, April 21st
Earth Day Celebration**
Maple Street Natives
7619 Henry Ave.
W. Melbourne, FL. 32904

Morning workshop 9:30-10:30
“**Creating Habitat with FL Native Plants**”. Signup via (321)729-6857 or info@maplestreetnatives.com

Live music 2-5, Refreshments, Book Sale, Plant sales all day. Come and relax under the oaks, listen to music, and celebrate planting Real Florida and support the Earth's Environment www.maplestreetnatives.com

Monday, May 14th
6:00pm - 8:00pm
**Beginning Beekeeping
with Brent Dolan**
Conradina Chapter Meeting
Melbourne Library on Fee Ave.

Florida black bear draft plan revised

The Florida black bear population has increased from as few as 300 bears in the 1970s to more than 3,000 bears today, and now the draft plan that will guide continued conservation of this species has been revised by the Florida Fish and Wildlife Conservation Commission (FWC).

The revised draft Black Bear Management Plan is available online at MyFWC.com/Bear and is ready for public input through June 1st.

Before and After – American Lady Butterfly

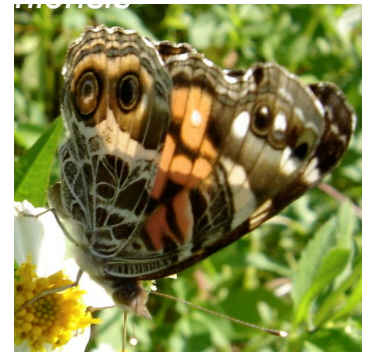
(*Vanessa virginiensis*)

Family: Brush-Footed Butterflies (*Nymphalidae*)

Larvae feed on Cudweeds (*Gnaphalium spp.*) and Everlastings. Adults have a low, rapid flight; adults overwinter; larvae construct individual shelters on host.



© Loret



© Loret

Extension Services

HOME CITRUS CULTURE

Friday April 20, – 2:00pm – 3:00pm

Extension Services, Osceola Heritage Park
1921 Kissimmee Valley Lane

Learn how to care for your backyard citrus. Topics include variety selection, maintenance, and pest management. Registration is required. 321-697-3000

BEYOND LAWN: GROUNDCOVERS FOR YOUR YARD

Tuesday May 15, 2012 – 10:00am – Noon

Extension Services, Osceola Heritage Park
1921 Kissimmee Valley Lane

Tired of mowing? Learn about a variety of low-growing groundcovers to replace your lawn grass. Registration is required. 407-944-5000

Florida Native Plant Society Membership Application

Membership in the Florida Native Plant Society enables you to receive their wonderful quarterly magazine The Palmetto. Joining the FNPS also entitles you to membership privileges in the Pine Lily Chapter of the FNPS and a subscription to their monthly newsletter *The Lily Pad*.

Name _____

Business name or organization _____

Address _____

City, State and Zip _____

Home phone _____ Work phone _____

The Florida Native Plant Society is registered as a 501(C)3 non-profit organization.

Check pertinent category:

- | | |
|--|---|
| <input type="checkbox"/> Individual \$35 | <input type="checkbox"/> Not-for-profit organization \$50 |
| <input type="checkbox"/> Full time student \$15 | <input type="checkbox"/> Business or corporate \$125 |
| <input type="checkbox"/> Library subscription \$15 | <input type="checkbox"/> Donor \$250 |
| <input type="checkbox"/> Family or household \$50 | <input type="checkbox"/> Life \$1000 |
| <input type="checkbox"/> Contributing \$75 | |
| <input type="checkbox"/> Supporting \$100 | |

Make check payable to: **FNPS**
Detach and mail to:
**Pine Lily Chapter of
Florida Native Plant Society
P.O. Box 278
Melbourne, FL 32902-0278**